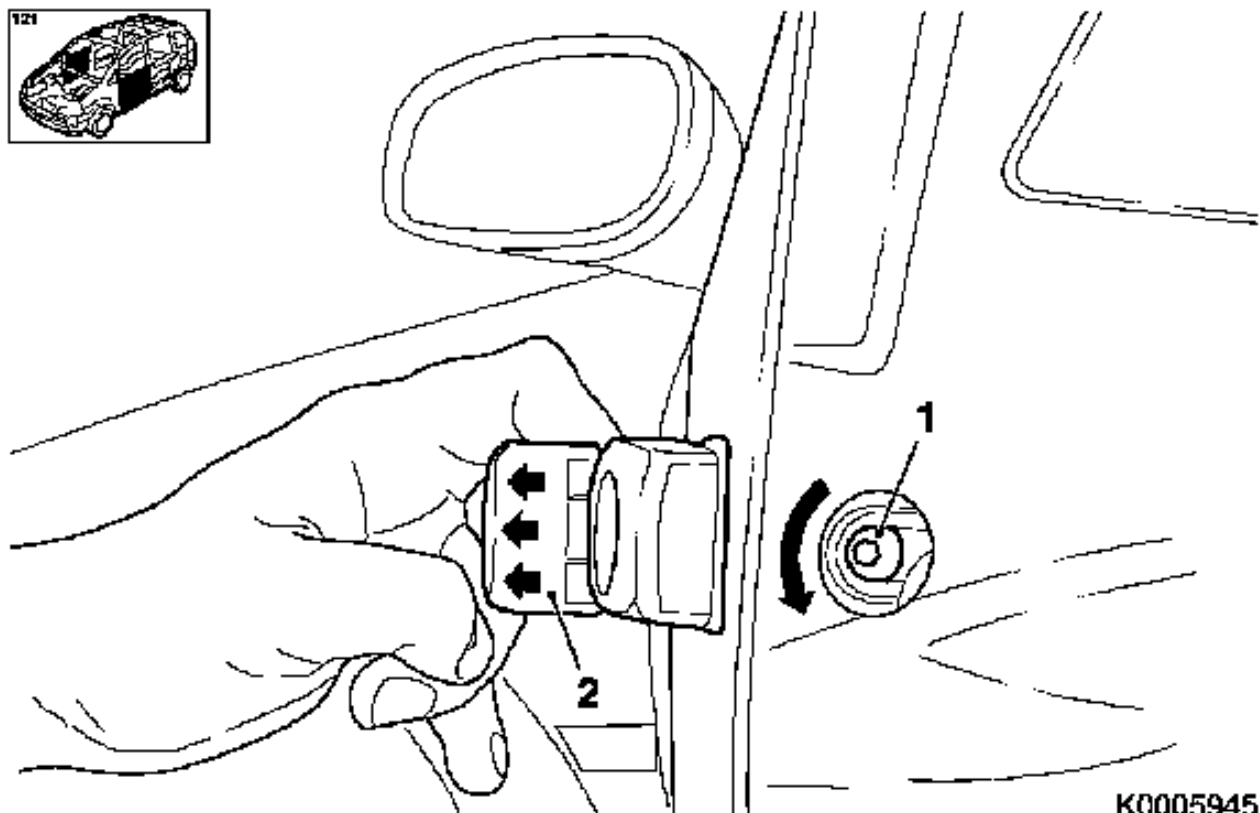
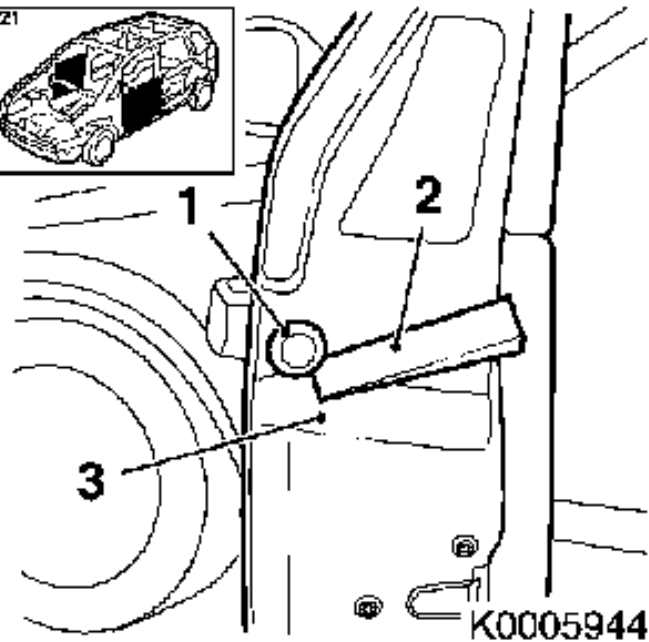
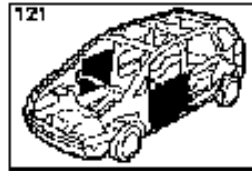


Outside Handle – Front Door, Remove and Install



Remove

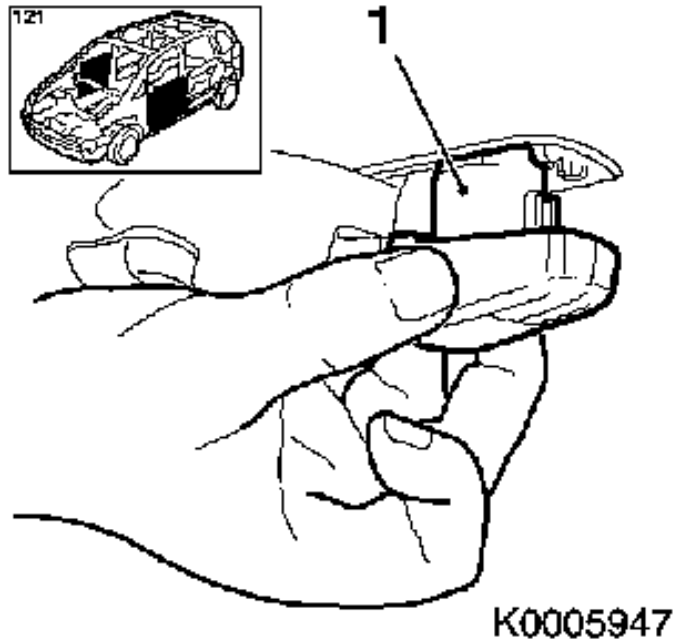
1. Open front door
2. Remove cover cap (1) out of front door (3)
 - Lever cover cap (1) out of front door using plastic wedge (2)
 - Remove cover cap (1)



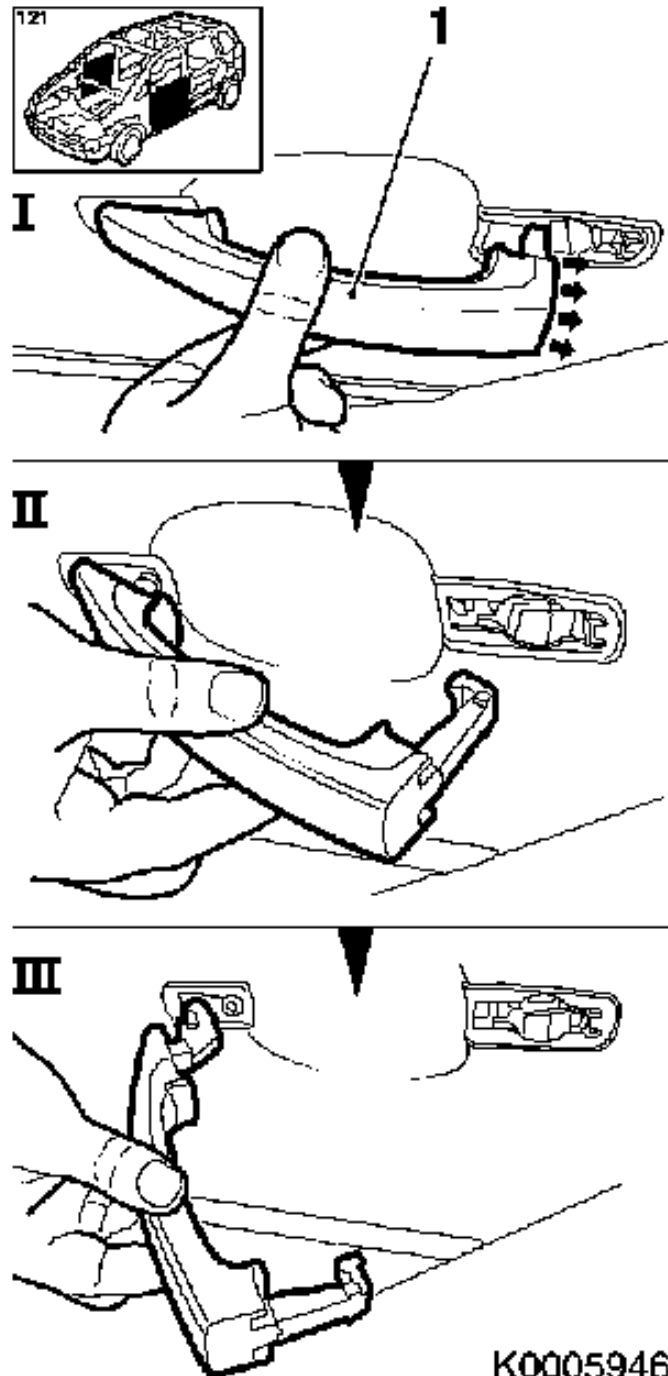
3. Remove front door outside handle
 - Pull movable handle part (2) outwards and hold
 - Turn 1x bolt (1) to the left to the stop using torx screwdriver

Note: Movable handle part (2) must now be secured in pulled position

4. Remove fixed rear handle part (1)



5. Pull movable handle part (1) to the rear (arrows) and remove

**Install**

6. Release front door outside handle
 - Guide movable handle part into door panel and latch into door handle cage
 - Insert fixed rear handle part
 - Turn 1x bolt to the right to the stop using torx screwdriver
 - Note:** Hold movable handle part taut while screwing and lightly counterhold fixed handle part.
7. Insert cover cap into front door
 - Insert cover cap
8. Close front door.